



Explore the Garden to see what you can find!

Make sure to stay with your family and on the paths, share what you discover, and have fun.

**A PLANT THAT DOES NOT
NEED SOIL TO GROW**

Epiphytes or air plants are types of plants that can get the water that they need either from the air or rainfall.

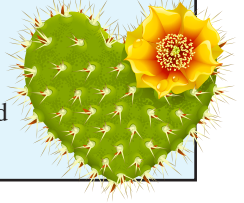


**THE TALLEST TREE THAT
YOU CAN SEE**

How old do you think the tree is? We can measure the rings that grow on the inside of the trunk each year to tell how old it is. We have tall Torrey Pines here that are over 80 years old!

**A PLANT WITH SPINES
(BE CAREFUL)**

Why do plants have spines? A lot of plants have spines for protection or to keep them from losing water in hot and dry weather.



**A PLANT THAT
YOU CAN EAT**

What part of the plant can you eat? Do you think animals eat this plant too?



A BUTTERFLY

What is the butterfly doing? Does it move fast or slow? Can you see it getting the nectar from flowers?



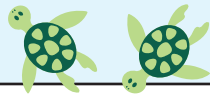
A FRUIT TREE

What kind of fruit comes from this tree? Have you ever eaten it?



A TURTLE IN THE POND

What is it doing? Our Pond Sliders are great at using the bottom of their shell to slide off of the shore and into the water. They often come out of the water to warm up in the sunlight.



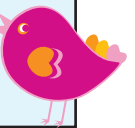
A YELLOW FLOWER

How do you think color helps the flower? Different colors of flowers can help attract pollinators. Pollinators are insects or birds that carry pollen from one flower to another. Once that happens, a fruit will form with seeds inside!



A BIRD SINGING

Can you try and make the sound of the bird? Why do you think it is singing? Bird calls often let other birds know to come near or stay away. We have over 90 different kinds of birds that visit the Garden!



A SEED OR SEED POD

What kind of plant is it from?

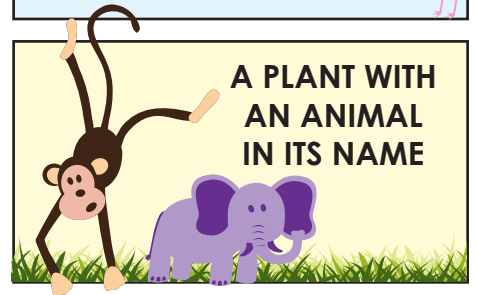


**THE TALLEST GRASS
YOU CAN FIND**

(hint bamboo is a grass)



**A PLANT WITH
AN ANIMAL
IN ITS NAME**



A LIZARD

What is the lizard doing? Lizards are great for the plants growing in the Garden because they hunt insects that may be eating our plants.



**A PLANT THAT IS NATIVE
TO CALIFORNIA**

Where are you from? That is where you are native to. A lot of plants come from only California originally and some are found only in San Diego.



**A PLANT THAT SMELLS
(GOOD OR BAD)**

Why do you think the plant is smelly? Sometimes it is to attract or keep away things that might eat it.

